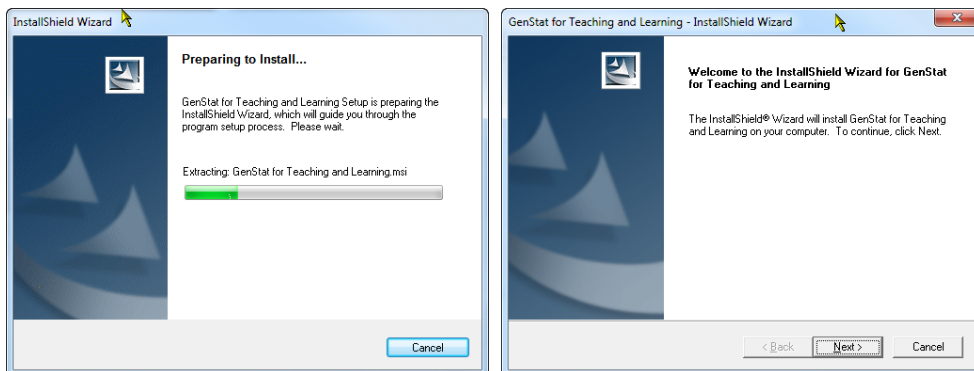


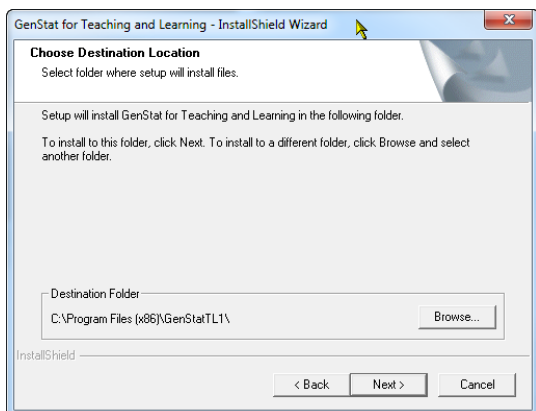
GenStat for Teaching and Learning: Installation Instructions

To start the installation, run the downloaded program GenStatTL1Setup.exe.

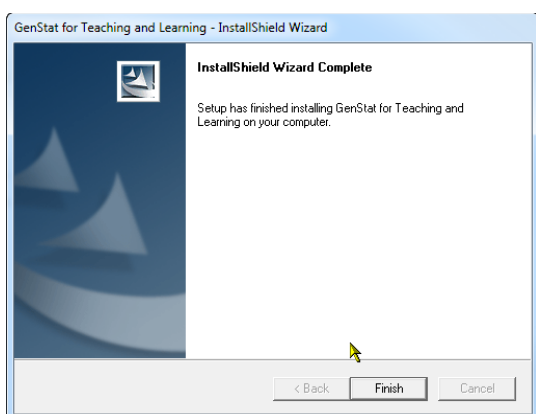
Depending on your security settings you may see a security warning. Click Run to start the installation after which you a welcome screen will be displayed.



On the welcome screen click the Next button. You will then be prompted to specify the location where you wish to install GenStat.



Once you have selected the destination folder click the Next button.



Click the finish button to complete the installation. The installation will include an entry in your Start menu and an icon on your desktop.

Notes for installing on a server

If GTL is installed onto a server then only the icon on the desktop or menu entry in the start menu needs to be made available in the default profile for all users.

License Installation Instructions

The GenStat for Teaching and Learning license is usually sent to you as an attachment in an email. The following steps detail how to install your license. If you do not receive the license as an email attachment but have a copy of the license file you proceed directly to Stage 3. If GTL is installed on a server then see notes at end of this section.

1. Open the email containing the license key as an attachment. Save this attachment, making a note of its file name and location
2. Copy the attachment to the computer which you have installed GenStat, if this is not the same computer on which you have already saved the attachment.
3. Start GenStat for Teaching and Learning on your computer.
4. You should see the initial start screen shown below.

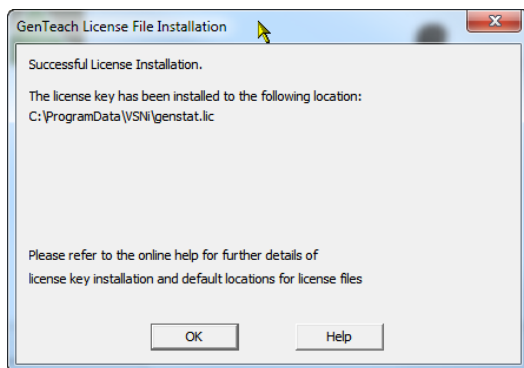


On this screen, click on the **Install License** button.

In the **Install License File** window shown below, select **Install from file**. Click on the **Browse** button and navigate to the license key file. Click on **Open**. Back in the **Install License** window, click on **OK**.



5. A window confirming that your licence has been successfully installed should appear (see below). In this window, click on **OK**. To start GenStat click on the **Start GenStat** button or alternatively click on the **Close** button to exit.



Notes for installing a license for GTL installed on a server

If GTL is installed on a server and is to be run from there then a license can be installed in the application folder of GTL. To do this save the license in a file called *genstat.lic* and then copy this file to the location: <GenStat appdir>\bin\genstat.lic, where <GenStat appdir> is the GTL application folder on the server, for example, \Program Files\GenStatTL1.